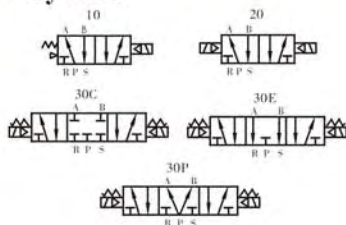


# SOLENOID VALVE(5/2 5/3 WAY)

## 4V100 SERIES



### Symbol

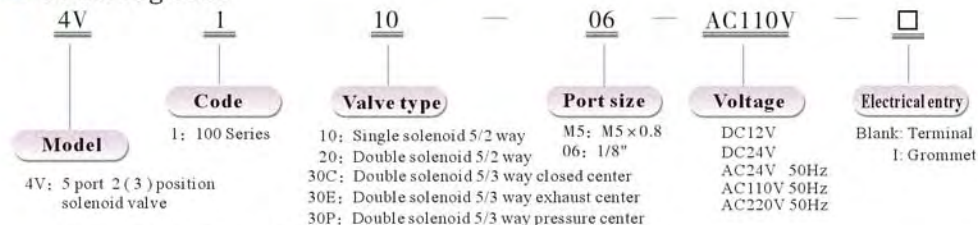


### Specification

Item/Type	4V110-M5	4V120-M5	4V130C-M5	4V130E-M5	4V130P-M5	4V110-06	4V120-06	4V130C-06	4V130E-06	4V130P-06
Fluid	Air (to be filtered by 40 $\mu$ filter element)									
Operating	Internally piloted									
Valve type	5 port 2 position			5 port 3 position			5 port 2 position		5 port 3 position	
Orifice size	5.5mm <sup>2</sup> (Cv=0.31)			5mm <sup>2</sup> (Cv=0.28)			12mm <sup>2</sup> (Cv=0.67)		9mm <sup>2</sup> (Cv=0.50)	
Port size	In=Out=Exhaust=M5					In=Out=Exhaust=1/8"				
Lubrication	Not required									
Pressure range	1.5~8.0 bar (0.15~0.8MPa)(21~114Psi)									
Proof pressure	12.0 bar (1.2MPa)(170Psi)									
Temperature	-5~60°C (23~140°F)									
Voltage range	-15%~+10%									
Power consumption	AC: 2.5VA DC: 2.5W									
Insulation	B class									
Protection	IP65 (DIN40050)									
Connector	DIN Terminal or Grommet									
Max frequency	5 cycle/sec			3 cycle/sec			5 cycle/sec		3 cycle/sec	
Min activating time	0.05 sec									
Weight	120g	175g	200g	200g	200g	120g	175g	200g	200g	200g

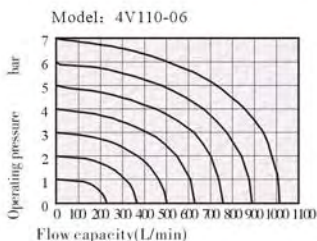
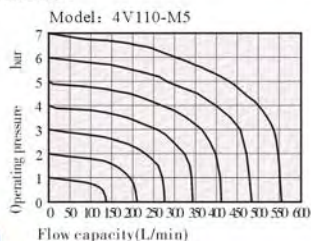
\*Note: PT, NPT, BSPP Thread are available.

### Ordering code



\* Note: Please to refer page I-27 for manifold type and ordering.

### Flow chart

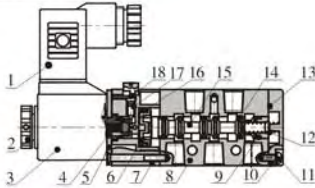


# SOLENOID VALVE(5/2 5/3 WAY)

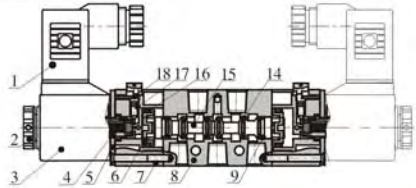
## 4V100 SERIES

### Inner structure

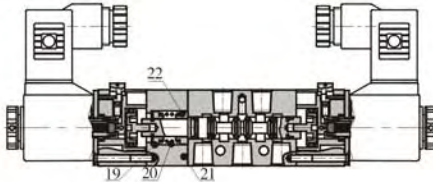
4V110



4V120



4V130C



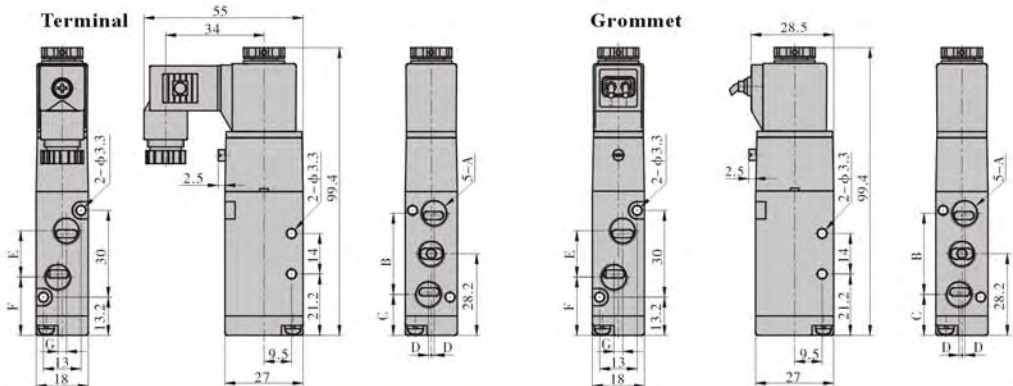
NO.	Item	NO.	Item
1	Connector	2	Nut
3	Coil	4	Armature assembly
5	Fixed plate	6	Piston
7	Pilot kit	8	Body
9	Wearing ring	10	Bottom cover
11	Fixed screw	12	Spool spring
13	Bottom cover gasket	14	Spool O-ring
15	Spool	16	Piston O-ring
17	Override spring	18	Manual override
19	Spring holder	20	Return spring
21	Side cover	22	Spring holder

### Material of major parts

Item	4V110	4V120	4V130	Item	4V110	4V120	4V130	Item	4V110	4V120	4V130
Body		Aluminum alloy		Fixed plate	Steel with nickel plated			Manual override spring		Stainless steel	
Spool		Aluminum alloy		Nut		Plastic		Spool spring		Stainless steel	
Manual override O-ring		NBR		Manual override		Copper		Pilot body		Plastic	
Connector gasket		NBR		Bottom cover	Zinc alloy			Fixed screw		Plastic	
Spool O-ring		HNBR		Bottom cover gasket	NBR			Coil cover		Heat-resistant resin	
Return kit	-		Copper	Pilot gasket		NBR		Manifold		Aluminum alloy	
Side cover	-		Aluminum alloy	Connector		Plastic		Piston		Plastic	
Return spring	-		Stainless steel	Return spring kit	-		Copper	Armature		Pure iron	

### Dimensions

4V110



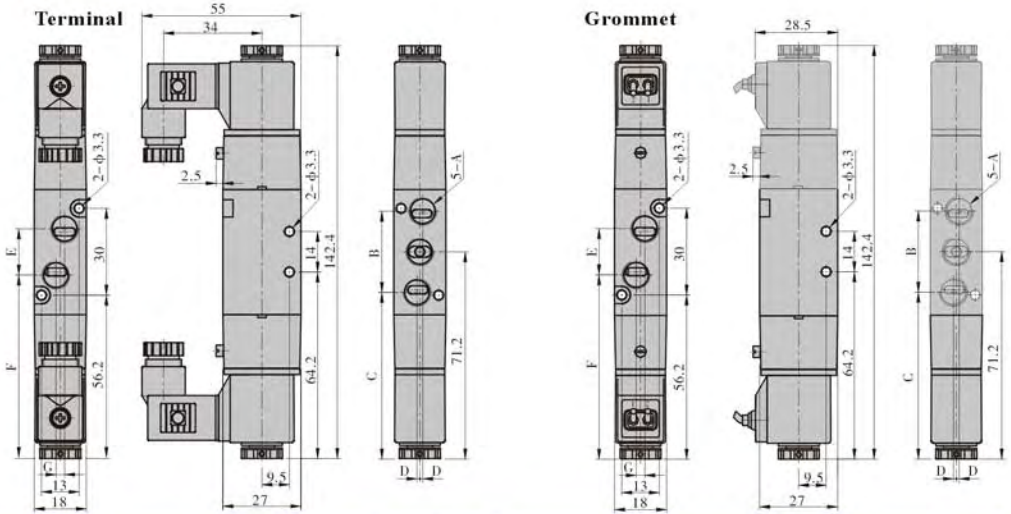
Model \ Item	A	B	C	D	E	F	G
4V110-M5	M5 × 0.8	27	14.7	0	14	21.2	0
4V110-06	1/8"	28	14.2	1	16	20.2	3



# SOLENOID VALVE(5/2 5/3 WAY)

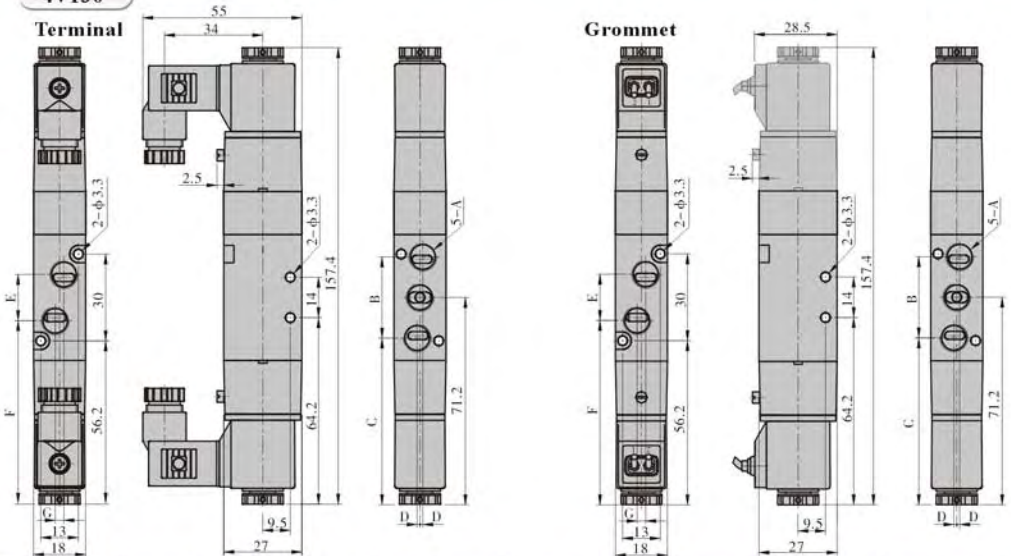
## 4V100 SERIES

### 4V120



Model \ Item	A	B	C	D	E	F	G
4V120-M5	M5 × 0.8	27	57.7	0	14	64.3	0
4V120-06	1/8"	28	57.2	1	16	63.2	3

### 4V130



Model \ Item	A	B	C	D	E	F	G
4V130-M5	M5 × 0.8	27	57.7	0	14	64.3	0
4V130-06	1/8"	28	57.2	1	16	63.2	3

