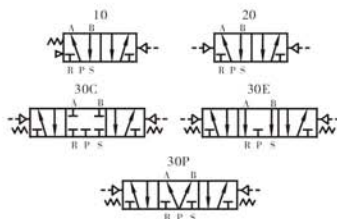


AIR VALVE(5/2 5/3WAY)

4A100 SERIES



Symbol

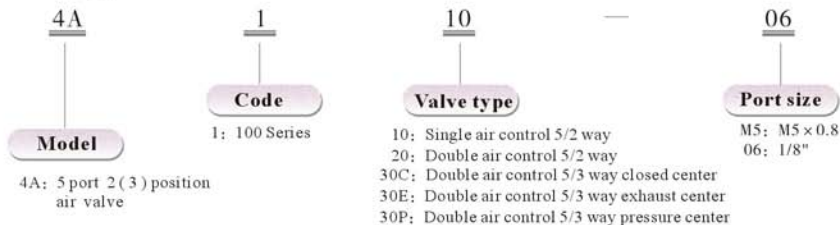


Specification

Item/Model	4A110-M5	4A120-M5	4A130C-M5	4A130E-M5	4A130P-M5	4A110-06	4A120-06	4A130C-06	4A130E-06	4A130P-06
Fluid	Air (to be filtered by 40 μ filter element)									
Acting	Exterior control									
Valve type	5 port 2 position		5 port 3 position			5 port 2 position		5 port 3 position		
Orifice size	5.5mm ² (Cv=0.31)		5mm ² (Cv=0.28)			12mm ² (Cv=0.67)		9mm ² (Cv=0.50)		
Port size	In=Out=Exhaust=M5					In=Out=Exhaust=1/8"				
Lubrication	Not required									
Pressure range	1.5~8.0 bar(0.15~0.8MPa)(21~114Psi)									
Proof pressure	12 bar(1.2MPa)(171Psi)									
Temperature	-5~60°C (23~140°F)									
Max.frequency	5 cycle/sec		3 cycle/sec			5 cycle/sec		3 cycle/sec		
Weight	120g	175g	200g	200g	200g	120g	175g	200g	200g	200g

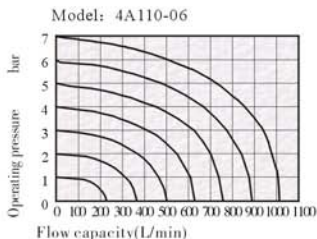
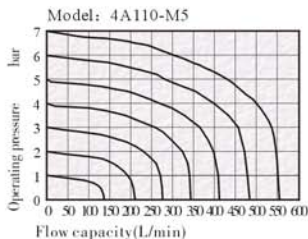
*Note: PT, NPT, BSPP Thread are available.

Ordering code



※ Note: Please to refer page I-48 for manifold type and ordering.

Flow chart

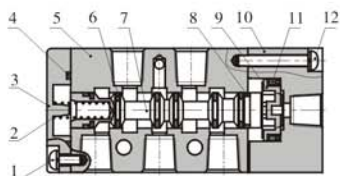


AIR VALVE(5/2 5/3WAY)

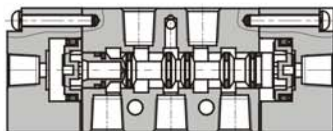
4A100 SERIES

Inner structure

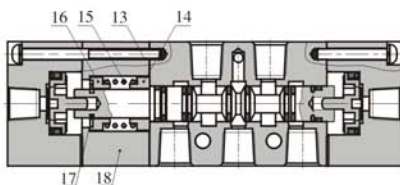
4A110



4A120



4A130C



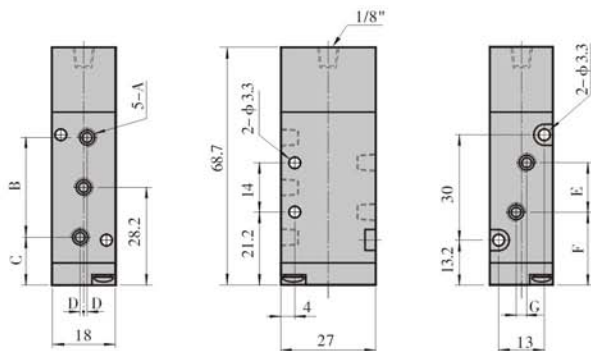
NO.	Item	NO.	Item
1	Bottom cover screw	10	Pilot body
2	Spool spring	11	Piston O-ring
3	Bottom cover	12	Pilot screw
4	Bottom cover gasket	13	Pilot screw
5	Body	14	Return seat
6	Spool O-ring	15	Return spring
7	Spool	16	Return seat
8	Wearing ring	17	E clip
9	Piston	18	Side cover

Material of major parts

Item	4A110	4A120	4A130	Item	4A110	4A120	4A130
Body	Aluminum alloy			Bottom cover	Zinc alloy	-	
Spool	Aluminum alloy			Pilot body	Aluminum alloy		
Spool O-ring	HNBR			Fixed screw	Iron		
Bottom cover gasket	NBR	-		Return spring	Stainless steel	-	
Piston	Plastic			Piston O-ring	NBR		

Dimensions

4A110



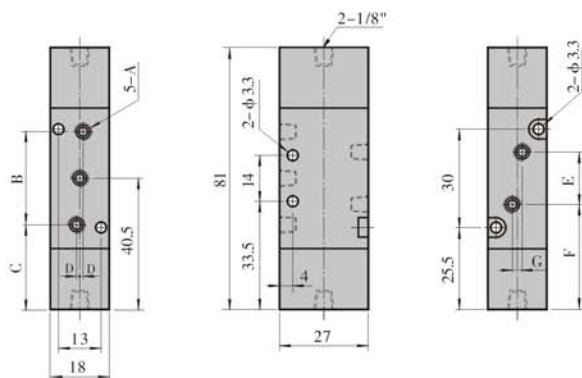
Item/Model	4A110-M5	4A110-06
A	M5 x 0.8	1/8"
B	27	28
C	14.7	14.2
D	0	1
E	14	16
F	21.2	20.2
G	0	3

AIR VALVE(5/2 5/3WAY)

4A100 SERIES

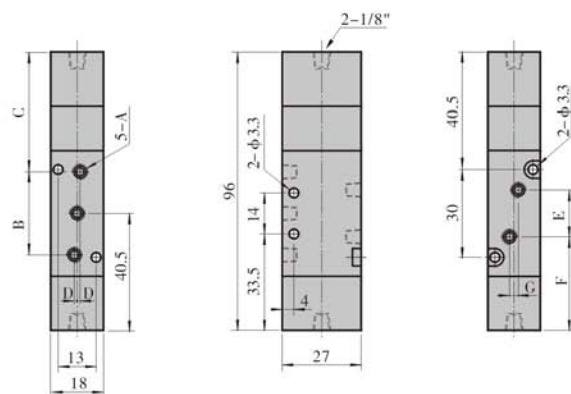
AIRTAC

4A120



Item\Model	4A120-M5	4A120-06
A	M5 x 0.8	1/8"
B	27	28
C	27	26.5
D	0	1
E	14	16
F	33.5	32.5
G	0	3

4A130

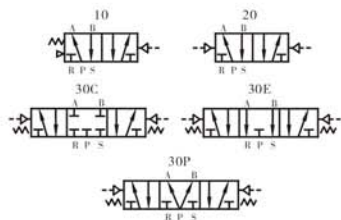


Item\Model	4A130-M5	4A130-06
A	M5 x 0.8	1/8"
B	27	28
C	42.2	41.5
D	0	1
E	14	16
F	33.5	32.5
G	0	3

AIR VALVE(5/2 5/3WAY)

4A200 SERIES

Symbol

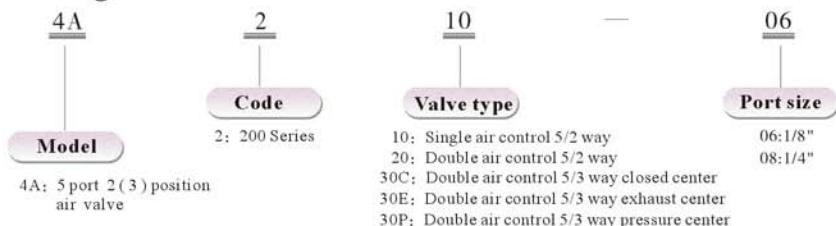


Specification

Item/Model	4A210-06	4A220-06	4A230C-06	4A230E-06	4A230P-06	4A210-08	4A220-08	4A230C-08	4A230E-08	4A230P-08
Fluid	Air (to be filtered by 40 μ filter element)									
Acting	Exterior control									
Valve type	5 port 2 position			5 port 3 position			5 port 2 position		5 port 3 position	
Orifice size	14mm ² (Cv=0.78)			12mm ² (Cv=0.67)			16mm ² (Cv=0.89)		12mm ² (Cv=0.67)	
Port size	In=Out=Exhaust=1/8"					In=Out=1/4"		Exhaust=1/8"		
Lubrication	Not required									
Pressure range	1.5~8.0 bar(0.15~0.8MPa)(21~114Psi)									
Proof pressure	12 bar(1.2MPa)(171Psi)									
Temperature	-5~60 $^{\circ}$ C (23~140 $^{\circ}$ F)									
Max.frequency	5 cycle/sec			3 cycle/sec			5 cycle/sec		3 cycle/sec	
Weight	220g	320g	400g	400g	400g	220g	320g	400g	400g	400g

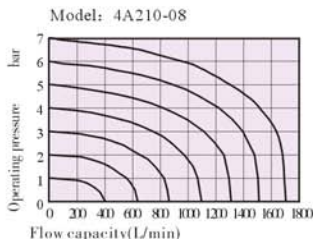
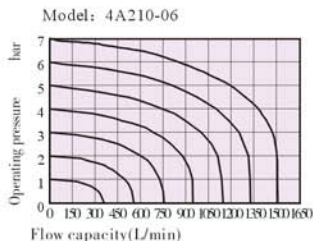
*Note: PT, NPT, BSPP Thread are available.

Ordering code



※ Note: Please to refer page 1-48 for manifold type and ordering.

Flow chart

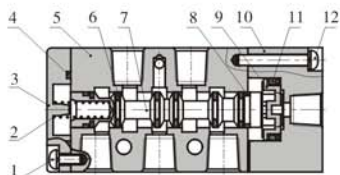


AIR VALVE(5/2 5/3WAY)

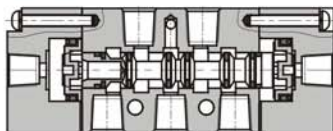
4A200 SERIES

Inner structure

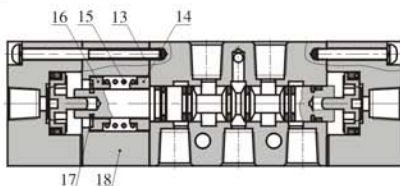
4A210



4A220



4A230C



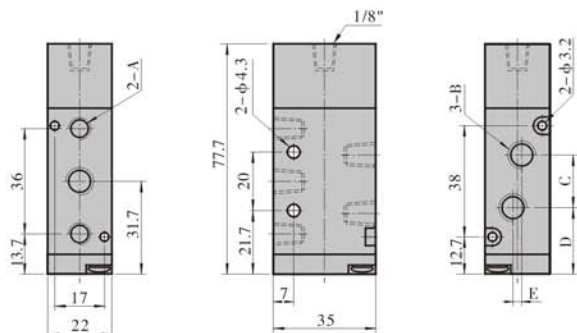
NO.	Item	NO.	Item
1	Bottom cover screw	10	Pilot body
2	Spool spring	11	Piston O-ring
3	Bottom cover	12	Pilot screw
4	Bottom cover gasket	13	Pilot screw
5	Body	14	Return seat
6	Spool O-ring	15	Return spring
7	Spool	16	Return seat
8	Wearing ring	17	E clip
9	Piston	18	Side cover

Material of major parts

Item	4A210	4A220	4A230	Item	4A210	4A220	4A230
Body		Aluminum alloy		Bottom cover	Zinc alloy		-
Spool		Aluminum alloy		Pilot body		Aluminum alloy	
Spool O-ring		HNBR		Fixed screw		Iron	
Bottom cover gasket	NBR		-	Return spring	Stainless steel		-
Piston		Plastic		Piston O-ring		NBR	

Dimensions

4A210



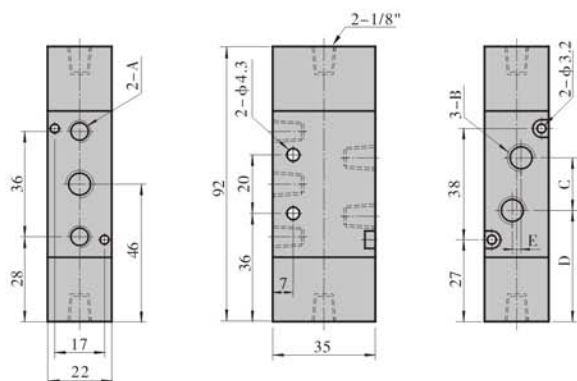
Item/Model	4A210-06	4A210-08
A	1/8"	1/8"
B	1/8"	1/4"
C	18	21
D	22.7	21.7
E	0	3

AIR VALVE(5/2 5/3WAY)

4A200 SERIES

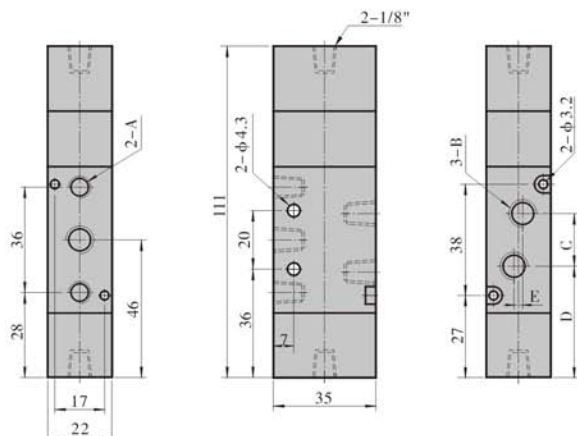
AIRTAC

4A220



Item\Model	4A220-06	4A220-08
A	1/8"	1/8"
B	1/8"	1/4"
C	18	21
D	37	35.5
E	0	3

4A230



Item\Model	4A230-06	4A230-08
A	1/8"	1/8"
B	1/8"	1/4"
C	18	21
D	37	35.5
E	0	3

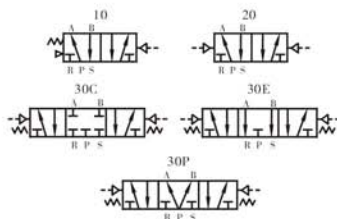


AIR VALVE(5/2 5/3WAY)

4A300 SERIES



Symbol

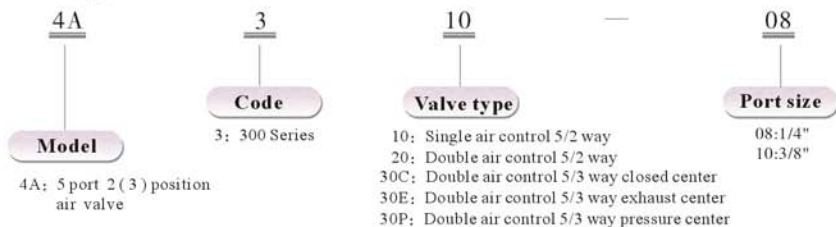


Specification

Item/Model	4A310-08	4A320-08	4A330C-08	4A330E-08	4A330P-08	4A310-10	4A320-10	4A330C-10	4A330E-10	4A330P-10
Fluid	Air (to be filtered by 40 μ filter element)									
Acting	Exterior control									
Valve type	5 port 2 position			5 port 3 position			5 port 2 position		5 port 3 position	
Orifice size	25mm ² (Cv=1.39)			18mm ² (Cv=1.00)			30mm ² (Cv=1.67)		18mm ² (Cv=1.00)	
Port size	In=Out=Exhaust=1/4"					In=Out=3/8"		Exhaust=1/4"		
Lubrication	Not required									
Pressure range	1.5~8.0 bar(0.15~0.8MPa)(21~114Psi)									
Proof pressure	12 bar(1.2MPa)(171Psi)									
Temperature	-5~60°C (-23~140°F)									
Max.frequency	4 cycle/sec			3 cycle/sec			4 cycle/sec		3 cycle/sec	
Weight	310g	400g	540g	540g	540g	310g	400g	540g	540g	540g

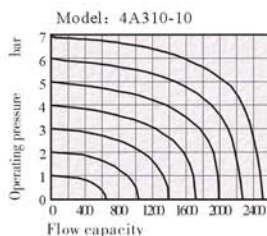
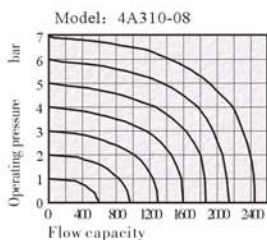
*Note: PT, NPT, BSPP Thread are available.

Ordering code



* Note: Please to refer page 1-48 for manifold type and ordering.

Flow chart

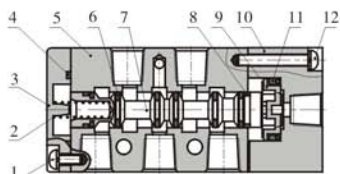


AIR VALVE(5/2 5/3WAY)

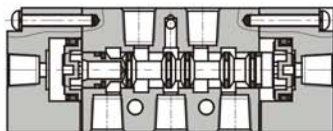
4A300 SERIES

Inner structure

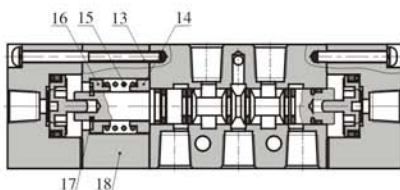
4A310



4A320



4A330C



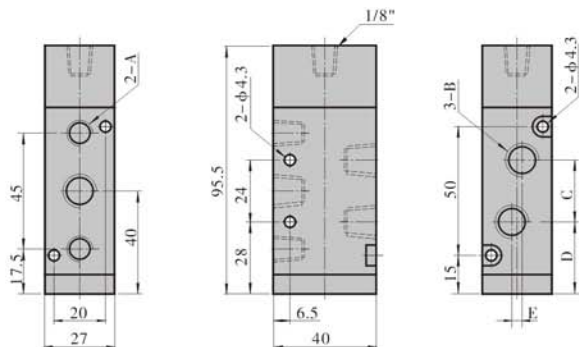
NO.	Item	NO.	Item
1	Bottom cover screw	10	Pilot body
2	Spool spring	11	Piston O-ring
3	Bottom cover	12	Pilot screw
4	Bottom cover gasket	13	Pilot screw
5	Body	14	Return seat
6	Spool O-ring	15	Return spring
7	Spool	16	Return seat
8	Wearing ring	17	E clip
9	Piston	18	Side cover

Material of major parts

Item	4A310	4A320	4A330	Item	4A310	4A320	4A330
Body		Aluminum alloy		Bottom cover	Zinc alloy		-
Spool		Aluminum alloy		Pilot body		Aluminum alloy	
Spool O-ring		HNBR		Fixed screw		Iron	
Bottom cover gasket	NBR		-	Return spring	Stainless steel		-
Piston		Plastic		Piston O-ring		NBR	

Dimensions

4A310



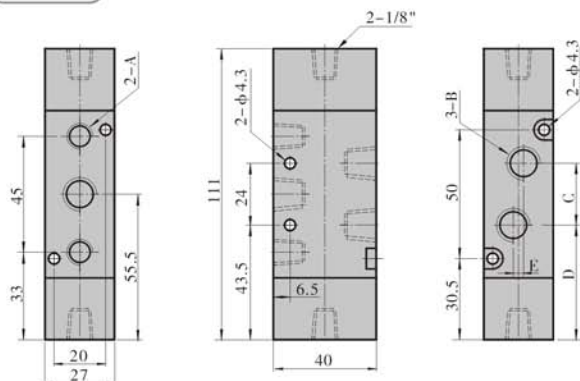
Item/Model	4A310-08	4A310-10
A	1/4"	1/4"
B	1/4"	3/8"
C	22	22
D	29	29
E	0	4

AIR VALVE(5/2 5/3WAY)

4A300 SERIES

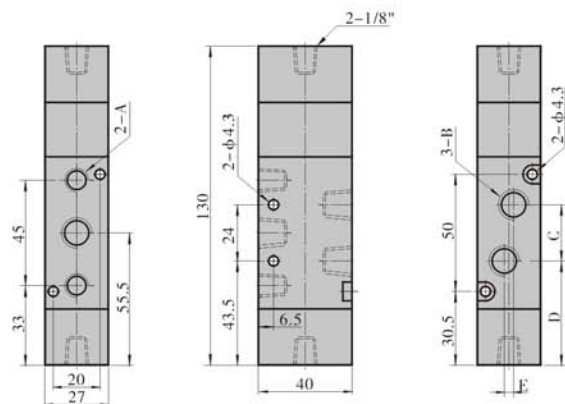
AIRTAC

4A320



ItemModel	4A320-08	4A320-10
A	1/4"	1/4"
B	1/4"	3/8"
C	22	24
D	44.5	43.5
E	0	4

4A330

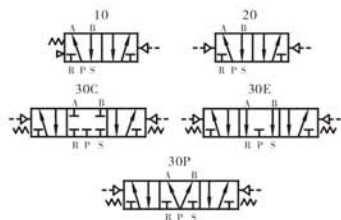


ItemModel	4A330-08	4A330-10
A	1/4"	1/4"
B	1/4"	3/8"
C	22	24
D	44.5	43.5
E	0	4

AIR VALVE(5/2 5/3WAY)

4A400 SERIES

Symbol

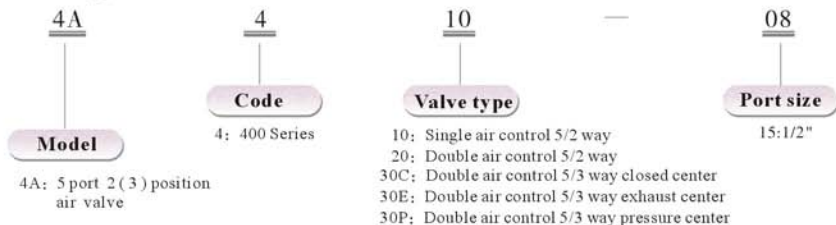


Specification

Item/Type	4A410-15	4A420-15	4A430C-15	4A430E-15	4A430P-15
Fluid	Air (to be filtered by 40 μ filter element)				
Acting	Exterior control				
Valve type	5 ports 2 positions		5 ports 3 positions		
Orifice size	50mm ² (Cv=2.79)		30mm ² (Cv=1.68)		
Port size	In=Out=Exhaust= 1/2"				
Lubrication	Not required				
Pressure range	1.5~8.0 bar(0.15~0.8MPa)(21~114Psi)				
Proof pressure	12 bar(1.2MPa)(171Psi)				
Temperature	-5~60°C (-23~140°F)				
Max. Frequency	3 cycle/sec				
Weight	590g	770g	770g	770g	770g

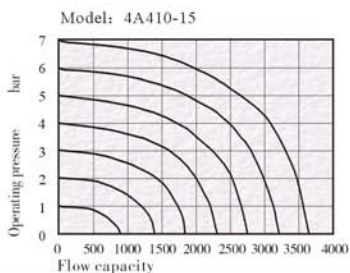
*Note: PT, NPT, BSPP Thread are available.

Ordering code



※ Note: Please to refer page I-48 for manifold type and ordering.

Flow chart

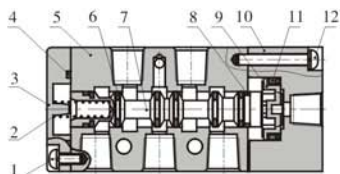


AIR VALVE(5/2 5/3WAY)

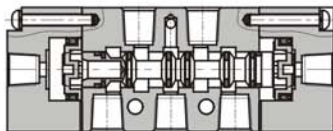
4A400 SERIES

Inner structure

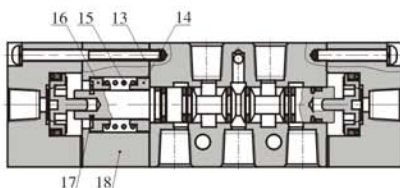
4A410



4A420



4A430C



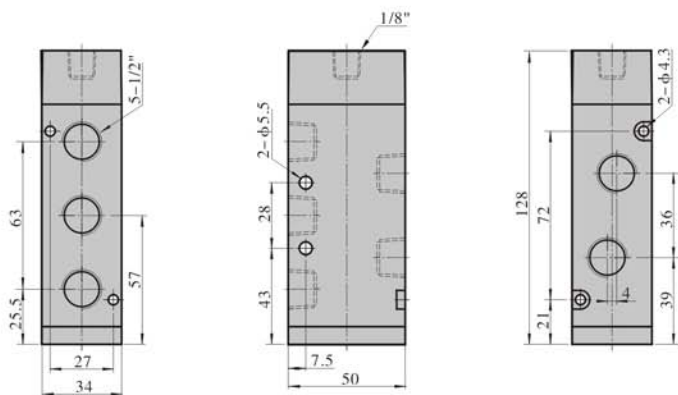
NO.	Item	NO.	Item
1	Bottom cover screw	10	Pilot body
2	Spool spring	11	Piston O-ring
3	Bottom cover	12	Pilot screw
4	Bottom cover gasket	13	Pilot screw
5	Body	14	Return seat
6	Spool O-ring	15	Return spring
7	Spool	16	Return seat
8	Wearing ring	17	E clip
9	Piston	18	Side cover

Material of major parts

Item	4A410	4A420	4A430	Item	4A410	4A420	4A430
Body		Aluminum alloy		Bottom cover	Zinc alloy		-
Spool		Aluminum alloy		Pilot body		Aluminum alloy	
Spool O-ring		HNBR		Fixed screw		Iron	
Bottom cover gasket	NBR		-	Return spring	Stainless steel		-
Piston		Plastic		Piston O-ring		NBR	

Dimensions

4A410

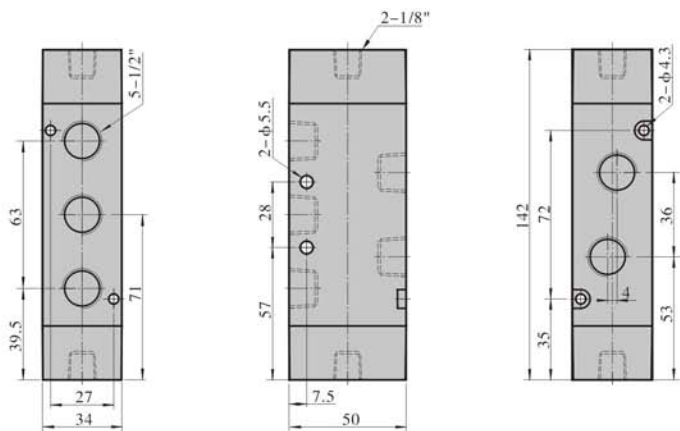


AIR VALVE(5/2 5/3WAY)

4A400 SERIES

AIRTAC

4A420



4A430

